



NAME: _____

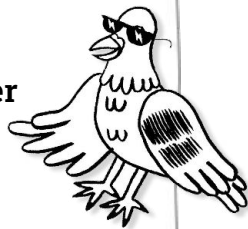
DATE: _____

EXPERIMENT INSPIRED BY

Now Watch Me Drip Drip: The Science of Slower Melting Ice Cream

MATERIALS

- ★ 3 small bowls
- ★ Ice cubes
- ★ Salt ★ Sugar
- ★ Timer ★ Marker
- ★ Masking tape



EXPERIMENT
WOW TO:

WHAT MELTS ICE FASTER?

Does ice melt fastest on it's own, when covered with sugar or covered with salt? This kitchen science experiment is easy to set up and uses materials we all have on hand.

- 1** **Make** a prediction- which bowl of ice do you predict will melt the fastest- The one with SUGAR? The one with SALT? Or the control?

- 2** **Label** the bowls CONTROL, SUGAR and SALT using the tape and marker.

- 3** **Fill** the three bowls with ice.

- 4** **Place** the sugar on the ice in the bowl that is marked SUGAR and the salt on the ice in the bowl that is marked SALT.

- 5** **Observe** the three bowls every 10 minutes for 30-60 minutes.

- 6** **Record** your results. What happened? Was your prediction correct?
